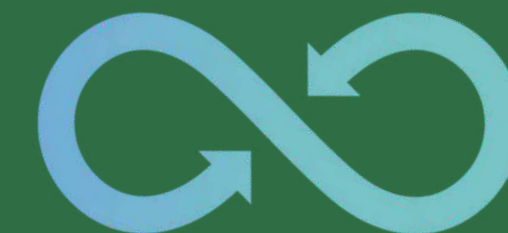




SERENA PADEL

ALUMINIUM COURTS 2023

SERENAPADEL AV/VEGAS ALTAS
Nº 195 06700 VILLANUEVA DE LA SERENA
TLF. : +34 924 84 50 11
E-MAIL: INFO@SERENAPADEL.COM



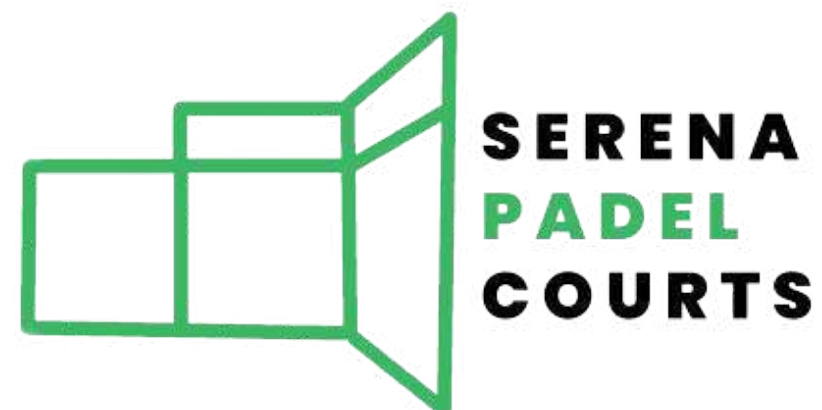
ABOUT US

Serena Padel is a company with more than 10 years of experience in the manufacturing and construction of aluminum paddle courts around the world.

We have our extensive facilities in Villanueva de la Serena, Badajoz, where we carry out our work of manufacturing aluminum paddle tennis courts.

We provide "turnkey" services, we offer a wide variety of grass to choose from, replacement of glass and we offer maintenance service.

Serena Padel has a team of engineers with extensive experience in the sector, able to advise you personally and develop the most appropriate solution for the implementation of your project.



KEYS TO ALUMINUM

DURABLE

ADAPTABLE

SUSTAINABLE

LIGHTWEIGHT

RESISTANT

SUITABLE

EASY CARE

NO COMBUSTIBLE



SUSTAINABLE AND ECOLOGICAL

SERENAPADEL works mainly with 100% recyclable aluminum



SERVICES & FACILITIES

- 15 years guarantee
- Project in hand, we take care of the installation and assembly of the track
- Installation and assembly of the court
- Personalized advice
- Padel courts completely customized to the client's request.





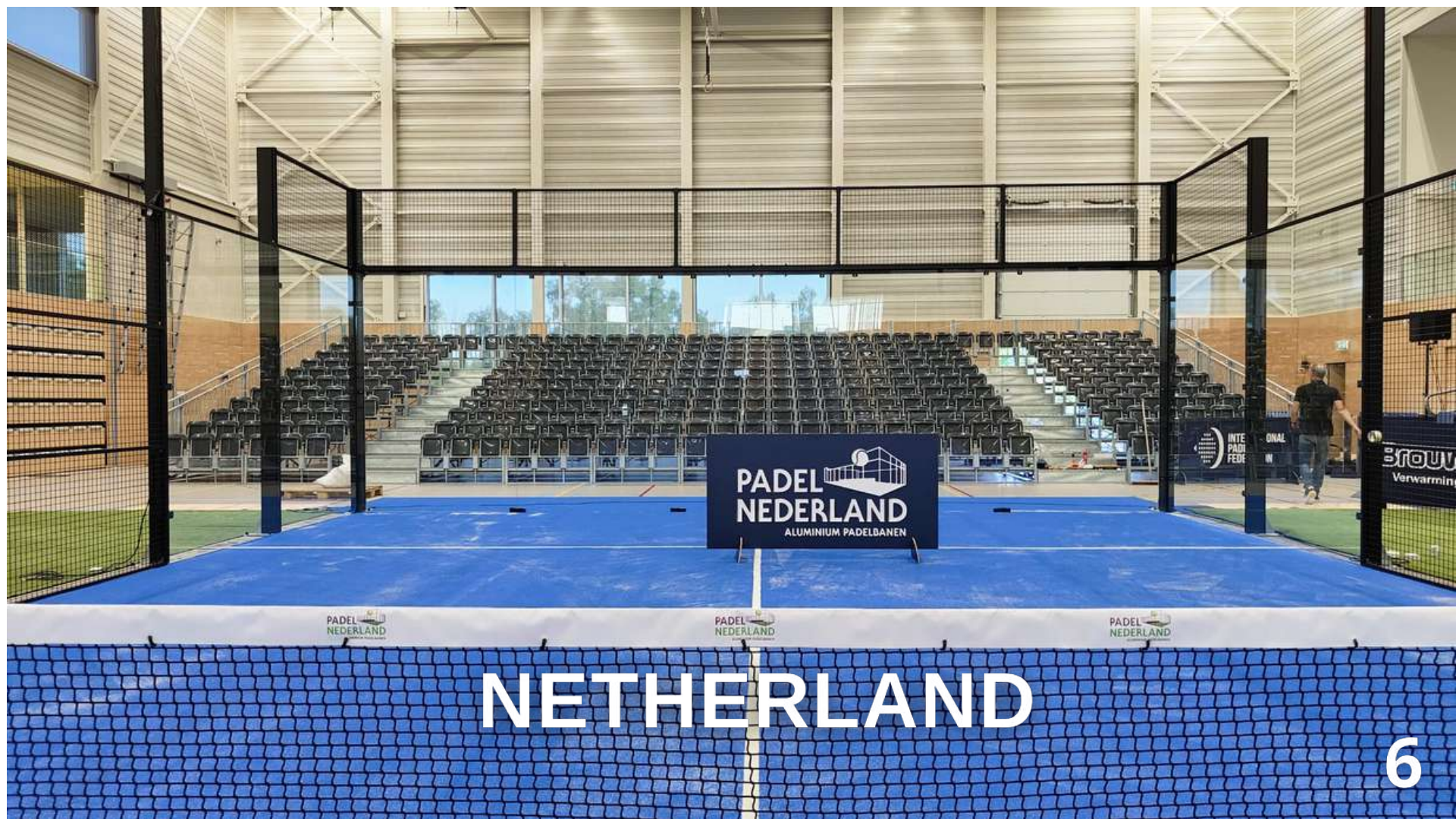
DENMARK



BAHRAIN



ALGECIRAS



NETHERLAND



RAFA NADAL ACADEMY



NETHERLAND



ITALY



BAHRAIN

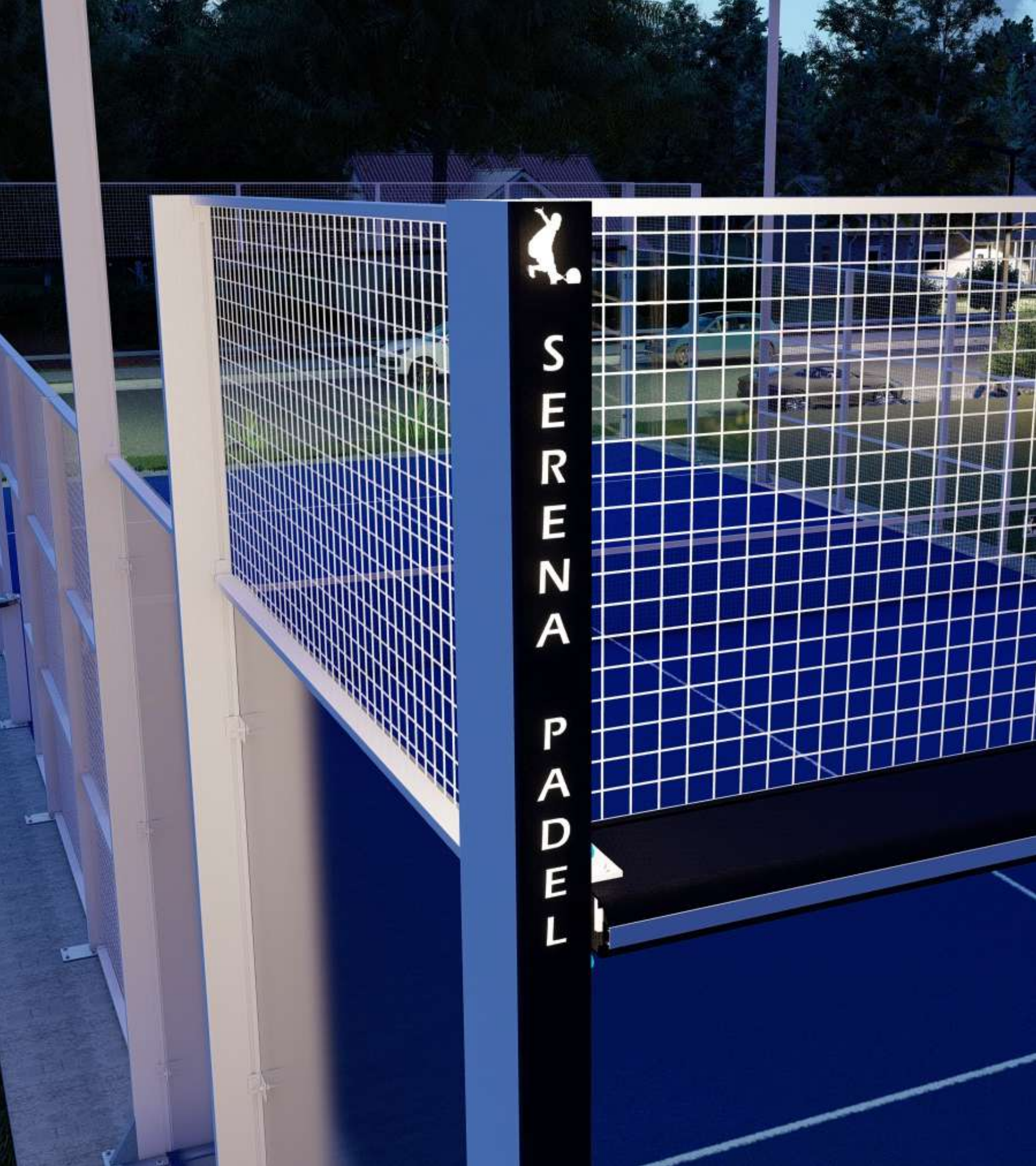
STARLIGHT VERSION

All courts can be customized in the corner with the logo of the club, screen-printed on an aluminum profile coupling in which in turn you can install an LED strip which can be customized.



S
E
R
E
N
A

P
A
D
E
L



PANORAMIC COURT

ESTRUCTURE:

- Aluminum profile structural system with pillar dimensions of 150x45x1.7(8 units), 106x232x3(4 units), 90x45x 1.7(8 units).
- Anchor plates in hot-dip galvanized steel for fastening the structure and glass with dimensions of 250x200x15(8 units), 495x250x15(4 units), 150x120x15(8 units).
- Upper horizontal beam in glass bottoms of 281x91(2 units).
- Electro welded mesh 50x50x4mm.
- Type A2 stainless steel M8 screws for fastening glass and mesh.
- Lighting poles integrated in the structure.
- Structure calculated according to the technical building code.
- 15-year warranty on the aluminum structure against corrosion and factory defects in the lacquer.

PANORAMIC COURT

GLASS:

Tempered safety glass in in 10 mm, 18 panels of 3000x2000, complying with the UNE-EN12150-1 standard.

ARTIFICIAL GRASS

- Fibrillated, monofilament or supercourt

LIGHTING

- Power of 200w per LED spotlight

FINISH

- Texurized polyester coating, possibility to choose color







SINGLE PANORAMIC COURT

ESTRUCTURE:

- Aluminum profile structural system with pillar dimensions of 150x45x1.7(8 units), 106x232x3(4 units),90x45x1.7 (8 units).
- Anchor plates in hot-dip galvanized steel for fastening the structure and glass with dimensions of 250x200x15(8 units), 495x 250x15(4 units)150x120x15(8 units)
- Upper horizontal beam in glass bottoms of 281x91(2 units)
- Electro-welded mesh 50x50x4mm
- Screws M8 stainless steel screws type A2 for glass and mesh fastening.
- Lighting poles integrated in the structure.
- Structure calculated according to the technical building code.
- 15-year warranty on the aluminum structure against corrosion and factory defect in the lacquer.

SINGLE PANORAMIC COURT

GLASS:

Tempered safety glass in 12mm thick tempered safety glass, 14 panes of 3000x2000, complying with the UNE-EN standard.

ARTIFICIAL GRASS

- Fibrillated, monofilament or supercourt

LIGHTING

- Power of 200w per LED spotlight

FINISH

- Texurized polyester coating, possibility to choose color







EUROPEAN COURT

ESTRUCTURE:

- Electro welded mesh 50x50x4mm
- Lighting poles integrated into the structure
- Structural system of aluminum profiles with pillar dimensions of 1920x45x2 (8 units), 150x45x1.7 (8 units), 115x115x1.7 (4 units), 150x45x1.7 (8 units).
- Anchor plates in hot-dip galvanized steel for fastening the structure and glass with dimensions 300x250x12(8 units), 250x200x12(8 units), 200x 200x 200x12(4 units), 200x200x12(8 units).
- Structure calculated according to the technical building code.
- 15 years warranty on the aluminum structure against corrosion and factory defect in the lacquer.

EUROPEAN COURT

GLASS:

- Tempered safety glass in 10mm, 18 panes of 3000x2000, complying with the UNE-EN12150-1 standard

ARTIFICIAL GRASS

- Fibrillated, monofilament or supercourt

LIGHTING

- Power of 200w per LED spotlight

FINISH

- Texturized polyester coating, possibility to choose color

COURT CREATED FOR HIGH WIND AREAS







OUTDOOR COURT

ESTRUCTURE:

- Aluminum profile structural system with pillar dimensions of 150x45x1.7(16 units), 115x115x1.7(4 units), 90x45 1.7(8 units).
- Anchor plates in hot-dip galvanized steel for fastening the structure and glass with dimensions of 250x200x12(16 units), 200x 200x 200x12(4 units), 150x120x12(8 units)
- Electro welded mesh 50x50x4mm.
- Type A2 stainless steel M8 screws for fastening glass and mesh.
- Lighting poles integrated in the structure
- Structure calculated according to building code

OUTDOOR COURT

GLASS:

Tempered safety glass in in 10 mm, 18 panels of 3000x2000, complying with the UNE-EN12150-1 standard.

ARTIFICIAL GRASS

- Fibrillated, monofilament or supercourt

LIGHTING

- Power of 200w per LED spotlight

FINISH

- Texurized polyester coating, possibility to choose color







SINGLE COURT

ESTRUCTURE:

- Aluminum profile structural system with pillar dimensions of 150x45x1.7(12 units), 115x115x1.7(4 units)90x45x1.7(8 units).
- Anchor plates in hot galvanized steel for fastening the structure and glass with dimensions of 250x200x12(12 units), 200x200x12(4 units), 150x120x12(8 units).
- Electro welded mesh 50x50x4mm.
- Lighting poles integrated in the structure.
- Structure calculated according to the technical building code.
- Screws M8 stainless steel screws type A2 for the fastening of glass and mesh.
- 15 years warranty on the aluminum structure against corrosion and factory defect in the lacquer.

SINGLE COURT

GLASS:

- Tempered safety glass in 10 mm, 14 panes of 3000x2000, complying with the UNE-EN12150-1 standard.

ARTIFICIAL GRASS

- Fibrillated, monofilament or supercourt

LIGHTING

- Power of 200w per LED spotlight

FINISH

- Texturized polyester coating, possibility to choose color







BABY COURT

ESTRUCTURE:

- Anchor plates in hot galvanized steel for fastening the structure and glass with measures 200x200x12(4 units) 150x120x12(16 units).
- Electro welded mesh 50x50x4mm
- Screws M8 in stainless steel type A2 for the fastening of glass and mesh.
- Lighting poles integrated in the structure
- Structure calculated according to technical building code.
- 15 years warranty on the aluminum structure against corrosion and factory defect in the lacquering.

BABY COURT

GLASS:

- Tempered safety glass in 10mm, 4 panes of 1500x2500 4 panes of 1500x1000 and 4 panes of 1000x1000, complying with the UNE-EN 12150-1 standard.

ARTIFICIAL GRASS

- Fibrillated

LIGHTING

- Power of 200w per LED spotlight

FINISH

- Texurized polyester coating, possibility to choose color







DOOR TYPES

Open court



DOOR TYPES

Hinged door



DOOR TYPES

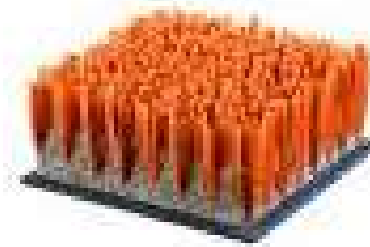
Sliding door



TURF

Main supplier:  **MONDO**

STX 96 A



SUPERCOURT® XN

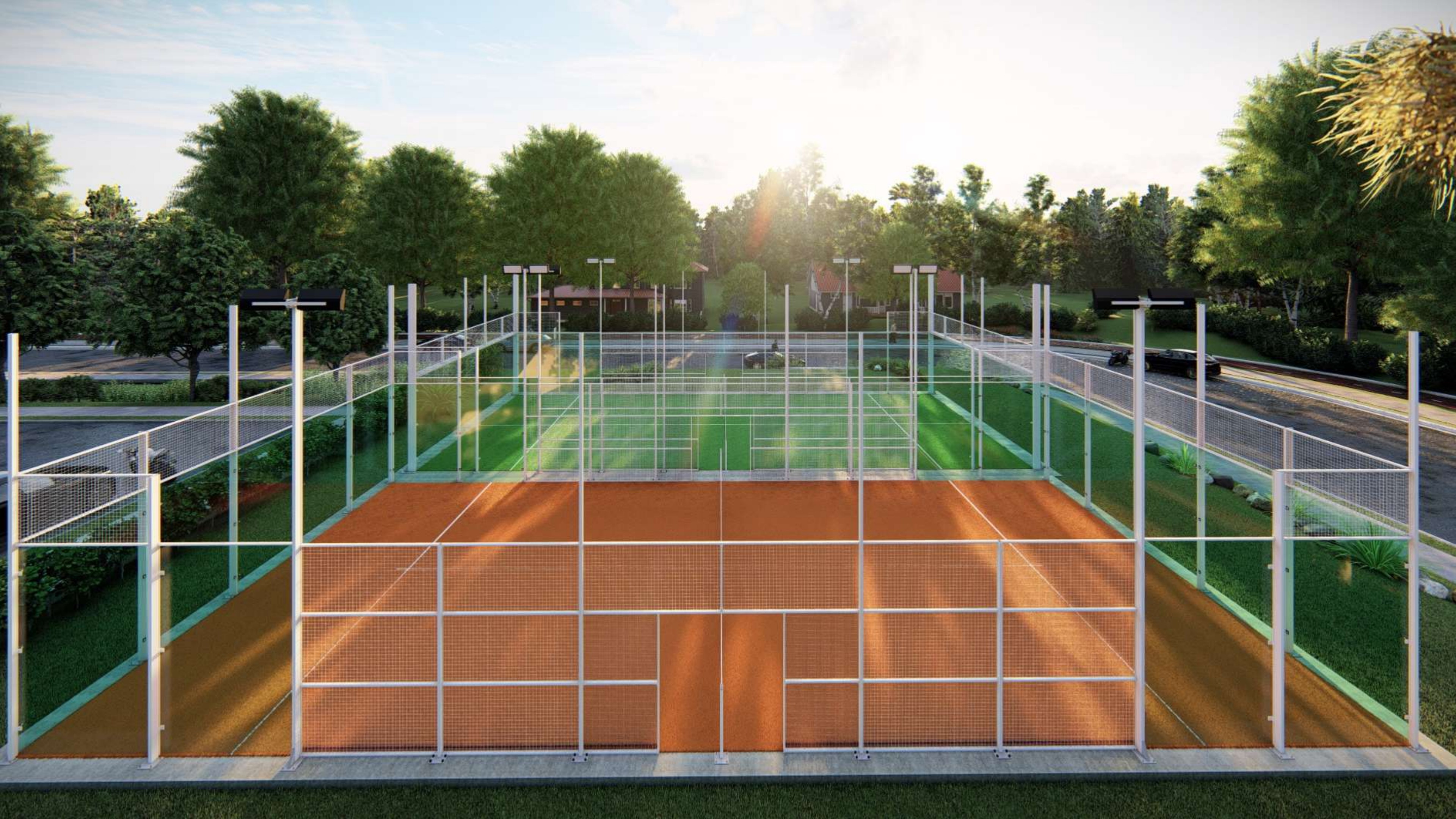


BALL SAVER

A structure is added to the court, which reaches a maximum height of 6 meters, to prevent the balls from leaving the enclosure.

This structure can be added to all courts.









DISEÑOS PERSONALIZADOS DE PISTAS



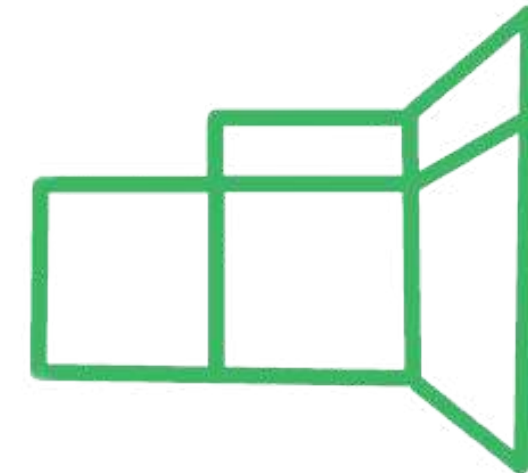
Multipurpose court for Italian company



Customized court for padel club in Bahrain



**SERENA
PADEL
STORE**



**SERENA
PADEL
COURTS**